

VENTUS OGI

SMALLEST, LIGHTEST AND LOWEST POWERED OPTICAL GAS IMAGING CAMERA CORE IN THE MARKET TODAY. OOOOA CERTIFIED.



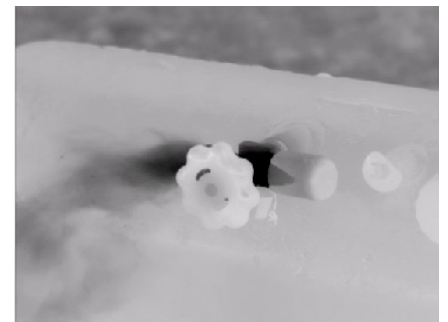
SIERRA-OLYMPIC
Technologies Inc.



The Ventus OGI (Optical Gas Imaging) camera core brings together the very latest in detector, cooler, and lens design for optimizing the detection and visualizing of methane, propane, butane, and many other hydrocarbon gas leaks. The combination of these state-of-the-art components creates the smallest, lightest- and lowest powered OGI camera core in the market today making it ideal for integration into gimbals or enclosures for unmanned aerial vehicle platforms or fixed-mounted, continuous monitoring systems.

The Ventus OGI utilizes a new state-of-the-art 640 x 512, 15 μ m pixel pitch "Hot MWIR" detector array with a special narrow bandpass cold filter in a miniature, long life, closed cycle, stirling cooler with an f/1.5 cold shield and an optimized purpose-built lens to provide unmatched thermal sensitivity. Weighing in at only 580 grams with a lens and sized at 148mm x 69mm x 73mm, the Ventus OGI is an easy choice for OEM's and integrators.

The Ventus core offers digital and analog outputs (CameraLink[®], NTSC/PAL) and RS-422 serial camera control. Ventus OGI offers superior image quality with true VGA image size for the finest possible resolution available in any OGI camera. The combination of optimized optics and the f/1.5 aperture creates images of stunning clarity and sensitivity. A suite of advanced image processing functions including automatic gain and dynamic contrast control delivers visual acuity to operators for efficient leak detection and remediation.



VENTUS OGI

SMALLEST, LIGHTEST AND LOWEST POWERED OPTICAL GAS
IMAGING CAMERA CORE IN THE MARKET TODAY. OOOOA CERTIFIED.



SIERRA-OLYMPIC
Technologies Inc.

FOCAL PLANE ARRAY:

Resolution	640 x 512
Sensor	IDC InAsSb-based
Pitch	15µm
Wavelength	3.2 - 3.42 µm
NETD	<28mK
Framerate	30Hz

OPTICS, SIZE, AND WEIGHT:

Part Number*	SL-VG63-025-00
Focal Length	25mm
HFOV	21.7°
F#	1.5
Weight (approx)	586g (1.3lb)
Envelope Dimensions (LxWxH) (approx)	148 x 69 x 73mm 5.8 x 2.7 x 2.9in
Digital Zoom	8x

INTERFACE:

Analog Video Output	NTSC/PAL
Digital Video Output	14-bit CameraLink
Command and Control	RS422 / CameraLink serial
Power Consumption	12VDC / 6W typ 12W peak

ENVIRONMENTAL:

Operating Temperature Range	-35 to +65C
Mounting	¼-20 Tripod Mount, M4 Tapped Holes
Certification	OOOOa Certified (<= 60 g/hr)

DETECTABLE GASES:

Acetic Acid, Ammonia, Benzene, Butadiene, Butane, Ethane, Ethylbenzene, Ethylene, Heptane, Hexane, Isoprene, Methyl Ethyl Ketone (MEK), Methane, Methanol, MIBK, Octane, 1-Pentane, Propane, Propylene, Sulphur Dioxide, Toluene, Vinyl Chloride and Xylene.

ADDITIONAL FEATURES

- + OGI Optimized Lens
- + Shutter and Scene-based NUC
- + Automatic/Manual Gain Control
- + Local Area Processed Dynamic Contrast Enhancement
- + Foreground/Background Contrast Enhancement
- + Digital noise reduction
- + Multiple color palettes / LUT
- + Symbology Overlay
- + Simultaneous analog/digital output

EXPORT CLASSIFICATION

- + EAR 6A003.b.4.a

APPLICATIONS:

- + Systems integrators
- + Pipe racks
- + Gathering and Transmission lines
- + Above and below ground gas pipelines
- + Fuel Gas Line
- + Valves
- + Flanges
- + Connections
- + Seals
- + Vent stacks
- + Compressors
- + Storage Tanks
- and more...

Gig-E Digital & H.264 IP Video versions available. Contact your sales engineer for more information.