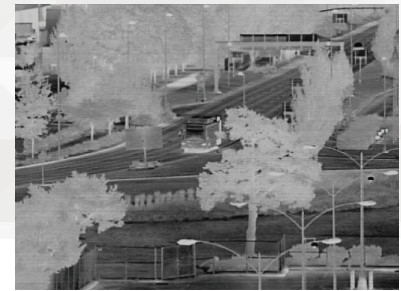


VIENTO-G

THERMAL CAMERA



SIERRA-OLYMPIC
Technologies Inc.



6° FOV



24° FOV



90° FOV

The Viento-G Thermal Camera is an easy-to-use feature packed thermal imager designed for a wide range of thermal applications. The Viento-G offers the ability to view video, supply power, and control the camera easily through a single standard Ethernet cable using the GigE Vision® and Power over Ethernet (PoE) standards.

Available in several form factors and resolutions and with a variety of lenses, the Viento-G is ideal for custom OEM applications. The Viento-G excels where a high reliability, high resolution, and low cost thermal imager is required.

The camera is available in two form factors, enclosed and split board, and each form factor can use either the 320 x 240 or 640 x 480 resolution detectors.

APPLICATIONS:

- + Industrial imaging
- + Medical Imaging
- + Bio medical imaging
- + Quality control and quality assurance

CAMERA FEATURES:

- + High Resolution
- + Uncompressed digital video output
- + 8-bit and 16-bit digital video options
- + Power, Control, and Video over a single cable (Ethernet)
- + Proprietary Image Contrast Enhancement (ICE)
- + Wide array of lens options
- + 2-year warranty
- + Compact and Low Power
- + Easy Export Models Available

VIENTO-G

THERMAL CAMERA



SIERRA-OLYMPIC
Technologies Inc.

320 LENS OPTIONS:

3° HFOV AF

6° HFOV AF

9° HFOV AF

9° HFOV AF

15° HFOV AF

16° HFOV AF

24° HFOV AF

27° HFOV AF

40° HFOV AF

42° HFOV AF

90° HFOV AF

640 LENS OPTIONS:

6° HFOV AF

9° HFOV AF

12° HFOV AF

17° HFOV AF

24° HFOV AF

37° HFOV AF

44° HFOV AF

90° HFOV AF

FEATURE SPECIFICATIONS:

Detector Type	Uncooled VOx Microbolometer
Array Size	640 x 480 or 320 x 240
Pixel Pitch	17 um
Response Range	8-14 um
NEdT @f/1.0	< 50 mK
Frame Rate (fps)	640 x 480: 30Hz or 9Hz 320 x 240: 60Hz, 9Hz
Camera Control	GigE Vision®
Image Acquisition	GigE Vision®
Digital Video Output	color, 8-bit, 14-bit
GENLOCK Trigger	Optional, Master or Slave
Auto Gain & Level	User defined; Persistent
Digital Zoom/Pan	ROI, E-zoom 1X -4X
NUC	1 pt. with mechanical shutter
Command Protocol	Serial byte stream over IP
Image Contrast Enhancement	On/Off, 10 levels of enhancement
Symbology	selectable, zoom, polarity, shutter
Configurations	Enclosed, Split Board Set
Electrical Interface	Gigabit Ethernet/PoE: RJ45 GENLOCK: SMA (enclosed) or PicoBlade (split board)
Color Palette Options	9 color palette options (color mode)
Available Software	Analyzer, Player, SDK

ENVIRONMENTAL SPECIFICATIONS

Input Voltage	PoE (nominal 48VDC, 802.3af)
Power Dissipation	Approximately 3 watts maximum
Operating Temp	-0° to +70° C
EMC Radiation	FCC class A digital device
Humidity	5 - 99%, non-condensing
Std. / Compliance	ROHS and WEEE compliance

*Specifications and descriptions subject to change without notice.